

# Living Streets Aotearoa

---

## Double the Feet on the Street

### Street Layouts for Walkable Cities

Jan McCredie

6<sup>th</sup> August 2008

Group Manager: Urban Design

Manukau City Council

# Contents



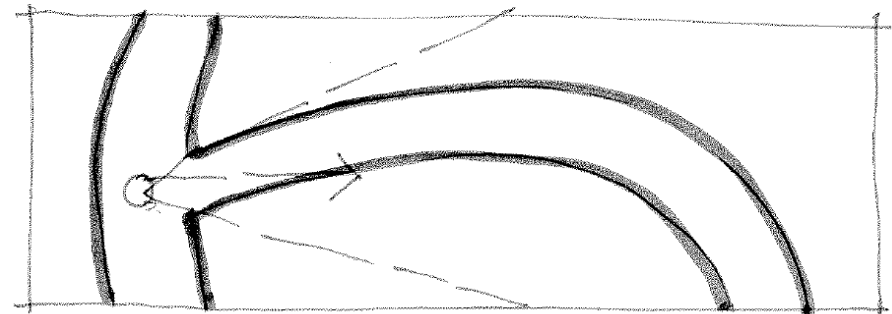
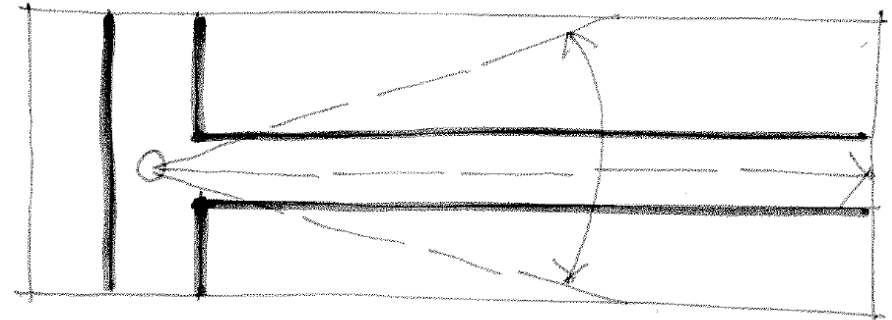
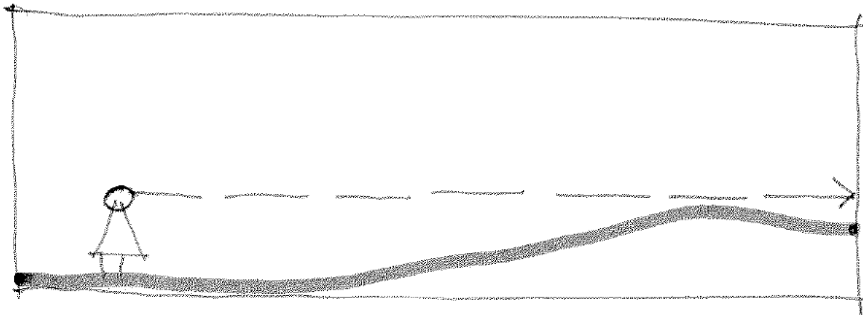
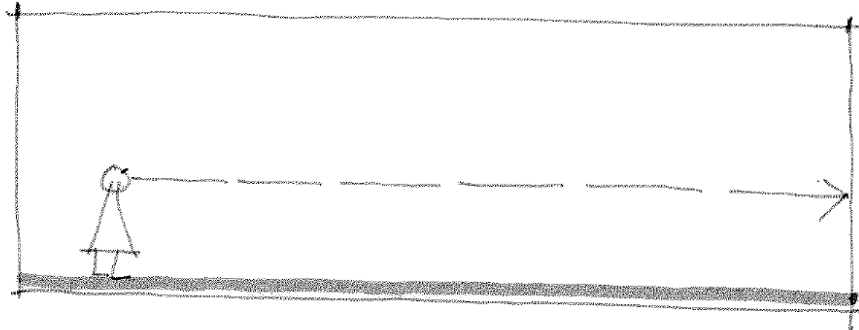
- ◆ City Components
- ◆ How People See
- ◆ The Traditional City
- ◆ The Change
- ◆ The Dead Worm Subdivision
- ◆ Comparison
- ◆ Intensification

# Urban Areas



- ◆ Urban Areas are made up of:
  - Topography (the Land)
  - Space (the Streets – 80%)
  - Buildings

# How People See....



# The Traditional City Rome

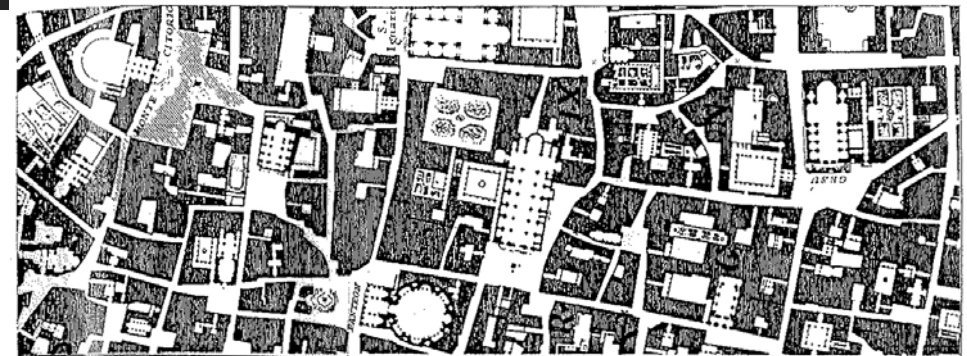


Figure 4-2. Giambattista Nolli. Map of Rome. 1748.  
Nolli's map graphically illustrates the figure-ground relationship of a traditional city where public civic space is carved out of the private tissue. (See also fig. 3-2.) The predominant field is a dense continuous mass, allowing open space to become a figural void.

# Why Grids are Great



- ◆ Benefits of (Straightish) Grids:
  - Sight
  - Distance
  - Choice
  - Legibility
  - Identity
  - Variety
  - Meeting Places
  - Apparent Density
  - Scale

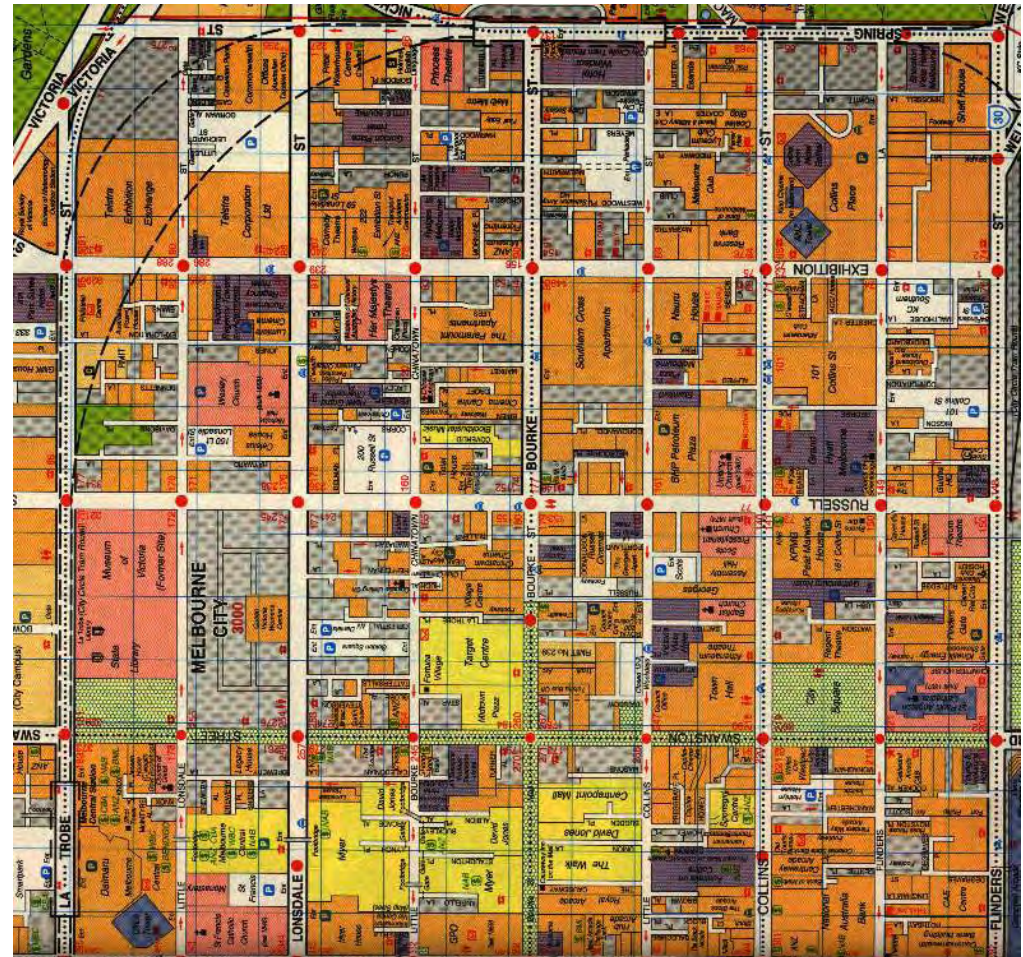
# Barcelona



# The Melbourne Grid



Te Kaitiaki o  
**MANUKAU**  
City Council

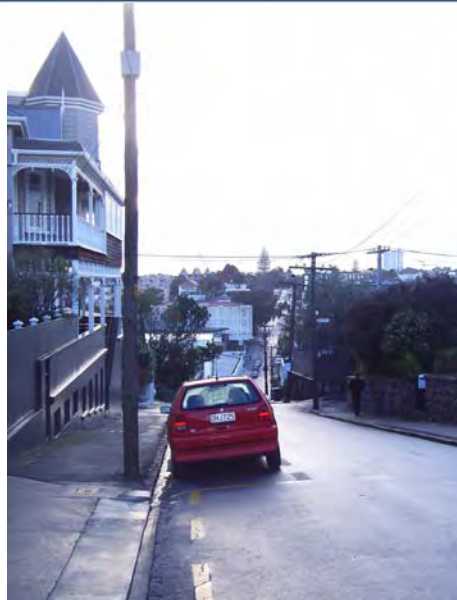




# Parnell



Te Kaitiaki o  
**MANUKAU**  
City Council



# Longueville, Sydney



Te Kaitiaki o  
**MANUKAU**  
City Council



# Devonport



# Rotorua



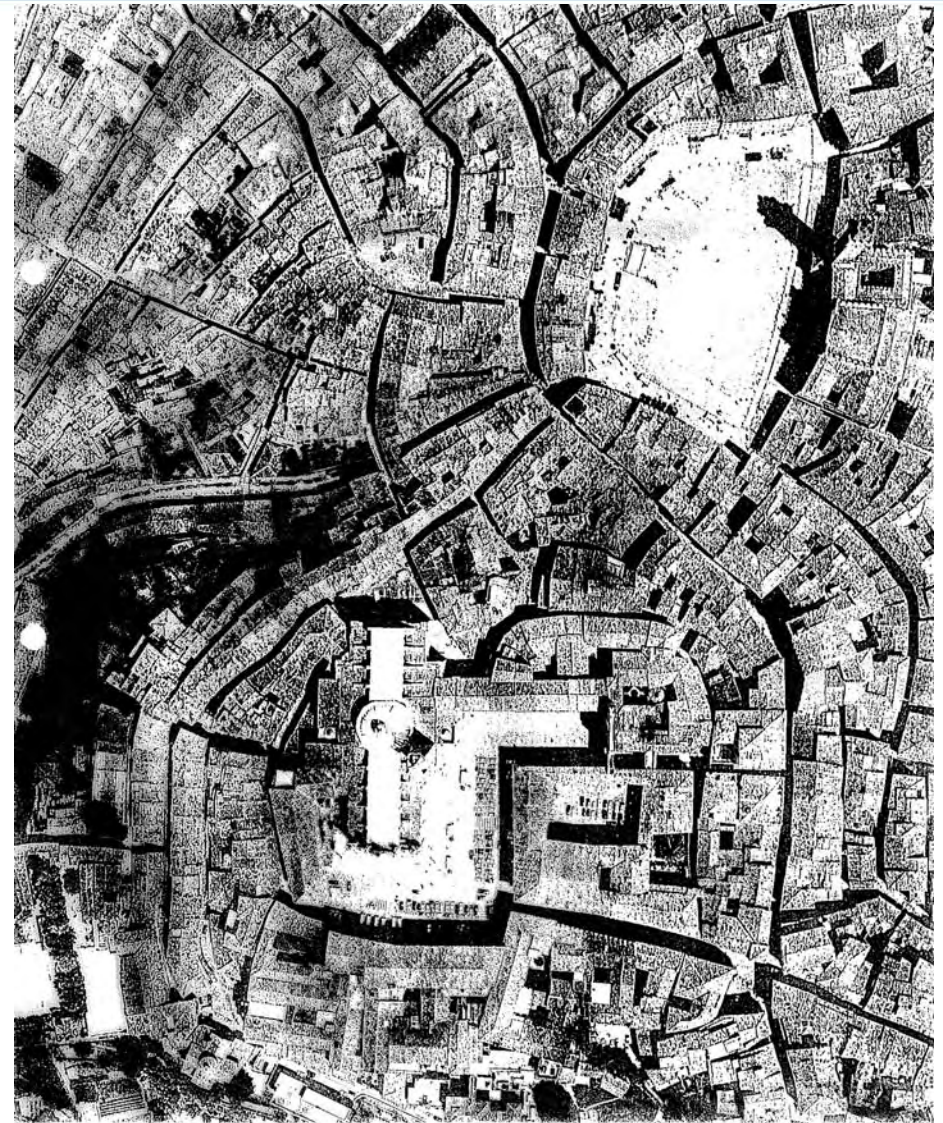
# Sydney



# Pymont, Sydney



# Squares and Meeting Places: Sienna



# Intersections as Meeting Places



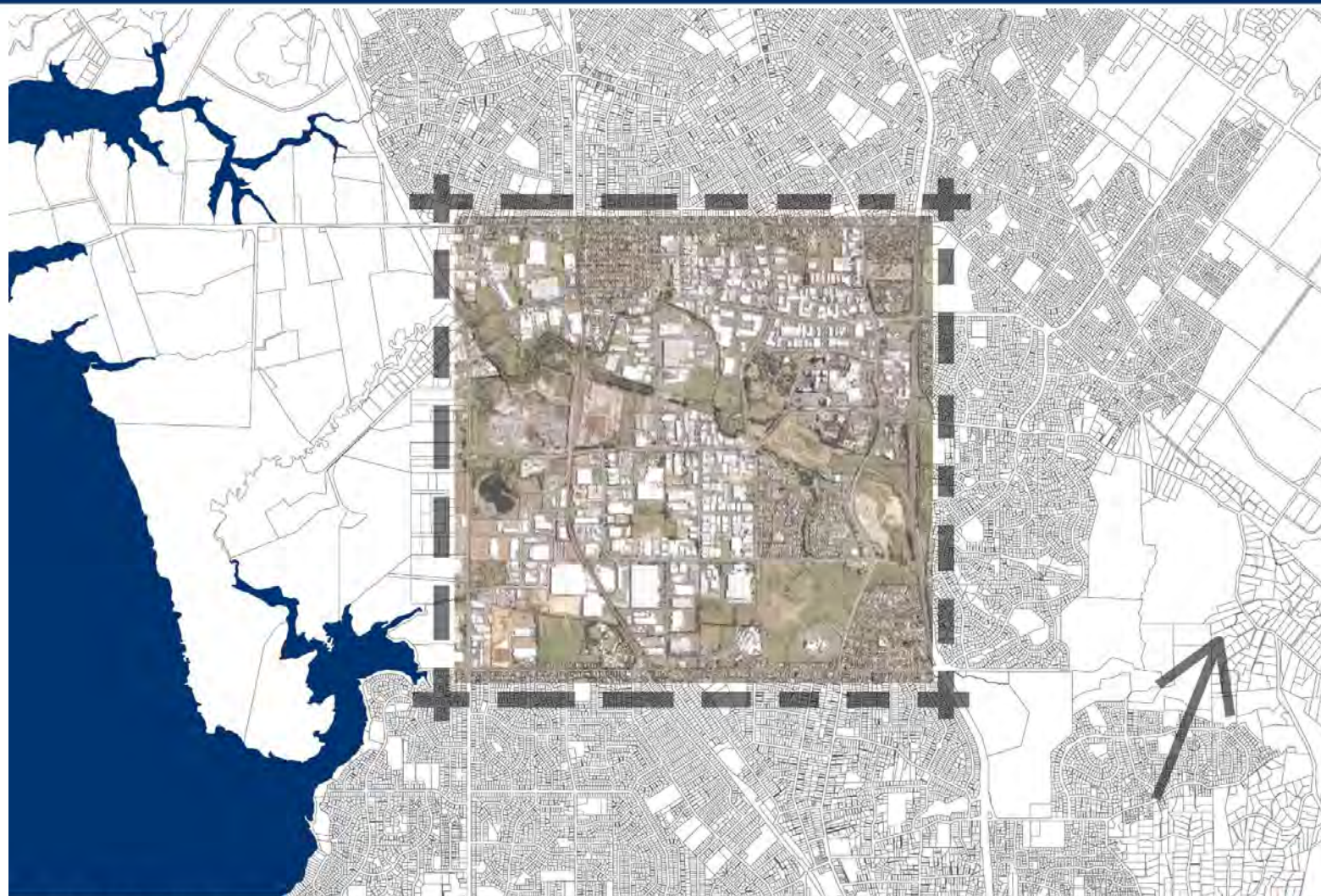
Te Kāwhiri o  
**MANUKAU**  
City Council



# Scale



Te Kaitiaki o  
**MANUKAU**  
City Council



A07203 MCC 1:25,000 @ A3  
Scale Comparison: Manukau

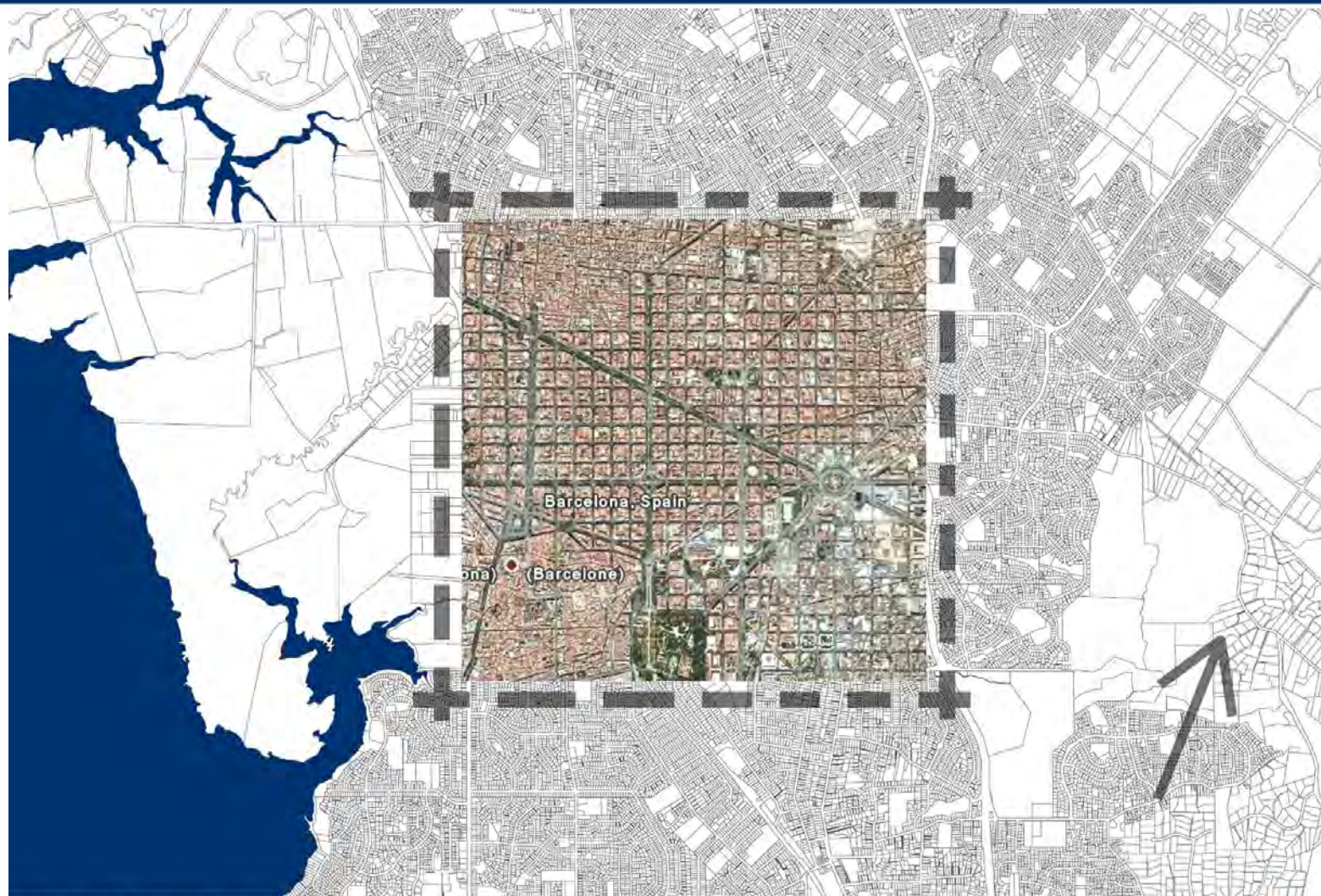




# Scale



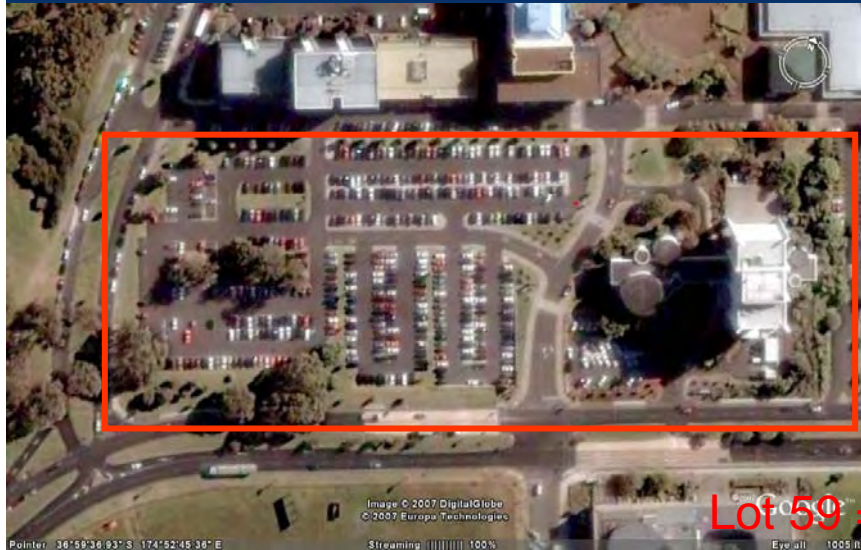
Te Kaitiaki o  
**MANUKAU**  
City Council



A07203 MCC 1:25,000 @ A3  
Scale Comparison: Barcelona



# Scale





Te Kaitiaki o  
MANUKAU  
City Council



The automobile has not merely taken over the street, it has dissolved the living tissue of the city. Its appetite for space is absolutely insatiable; moving and parked, it devours urban land, leaving the buildings as mere islands of habitable space in a sea of dangerous and ugly traffic. -James Marston Fitch, historic preservationist (1909-2000)

# The Change:

## Paris



## Toulouse



# Complete Separation - Topography, Space & Building



# Auckland



Te Kaitiaki o  
**MANUKAU**  
City Council





Te Kāwhiri o  
**MANUKAU**  
City Council



THE ROMAN'S ROAD BUILDING SCHEME WAS GOING TO PLAN UNTIL THEY DISCOVERED CIDER.

# Dead Worm Subdivision

## Australia



## New Zealand





# Comparison between Traditional & Dead Worm



# Comparison between Traditional & Dead Worm



# Comparison between Traditional & Dead Worm



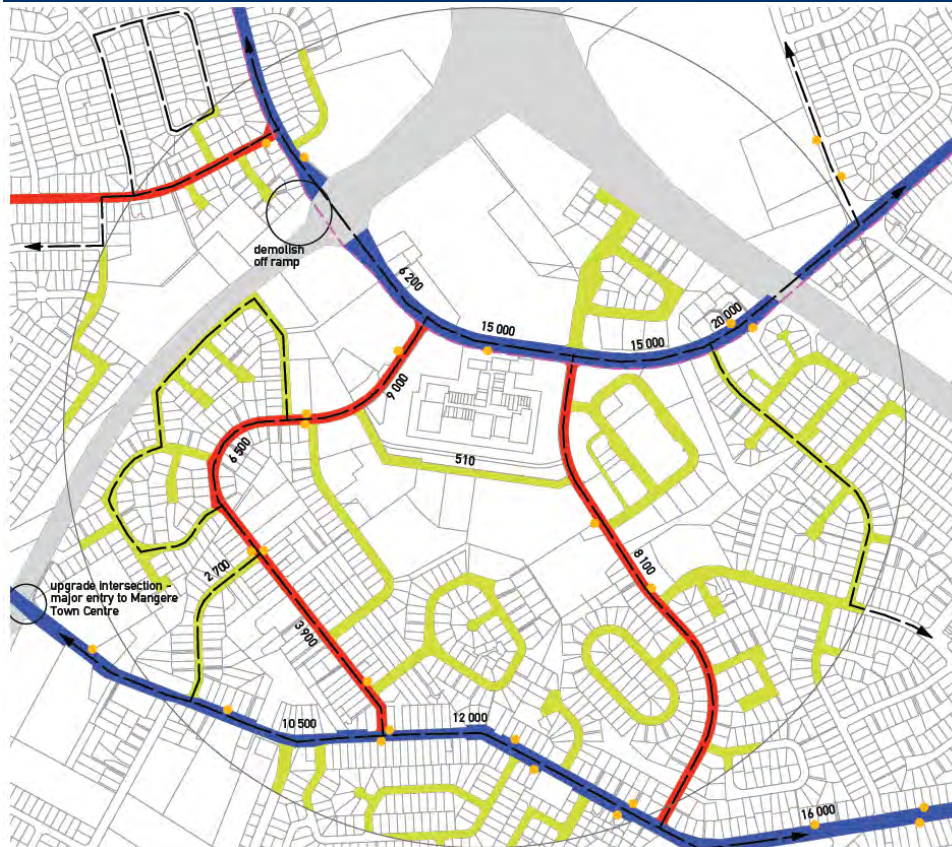
# Comparison between Traditional & Dead Worm



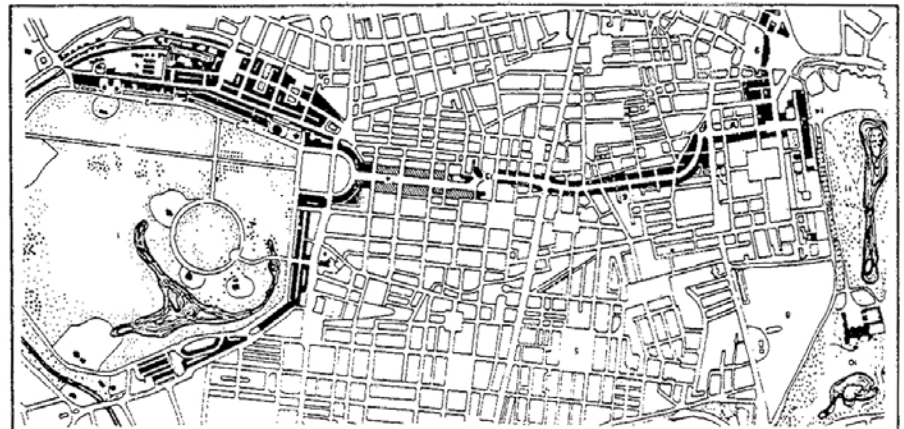
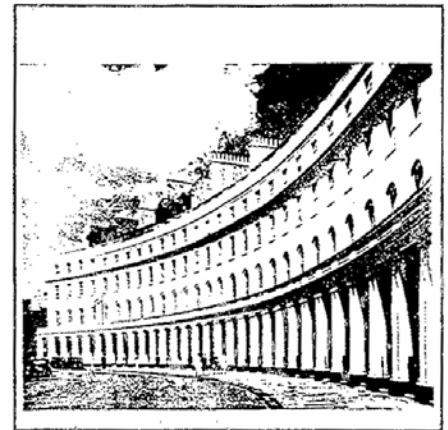
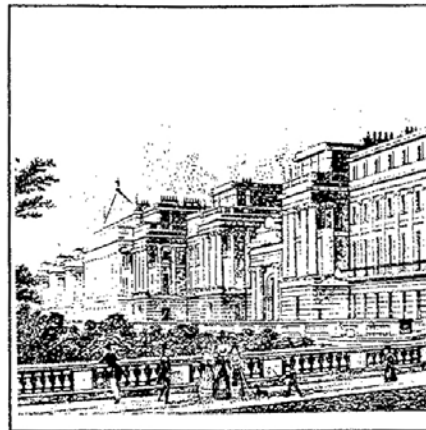
# Intensification: Traditional Street Blocks



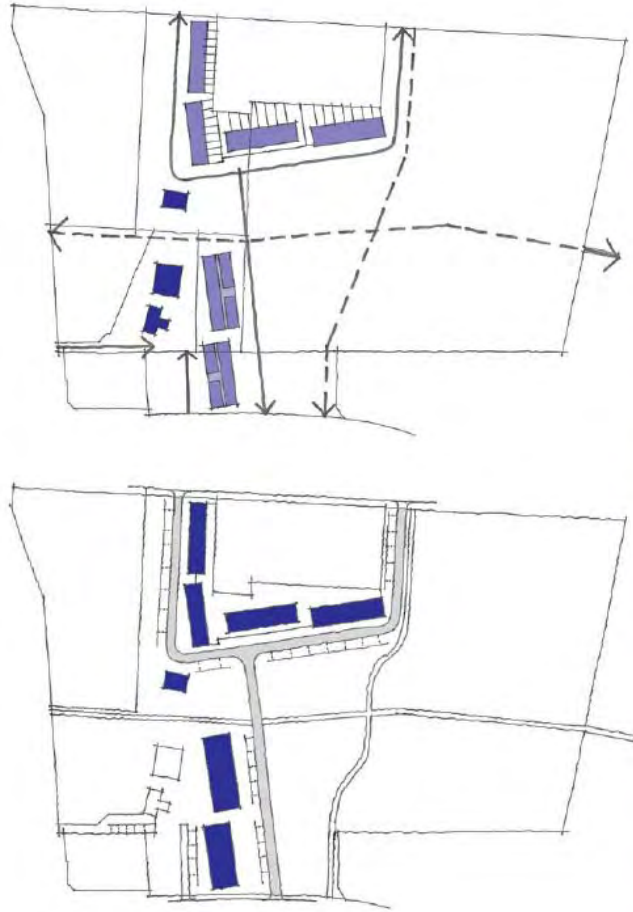
# Intensification in Dead Worm Subdivisions



# Regent Street & Park London



# Intensification around Parks



*Proposed street pattern Gallaher block*



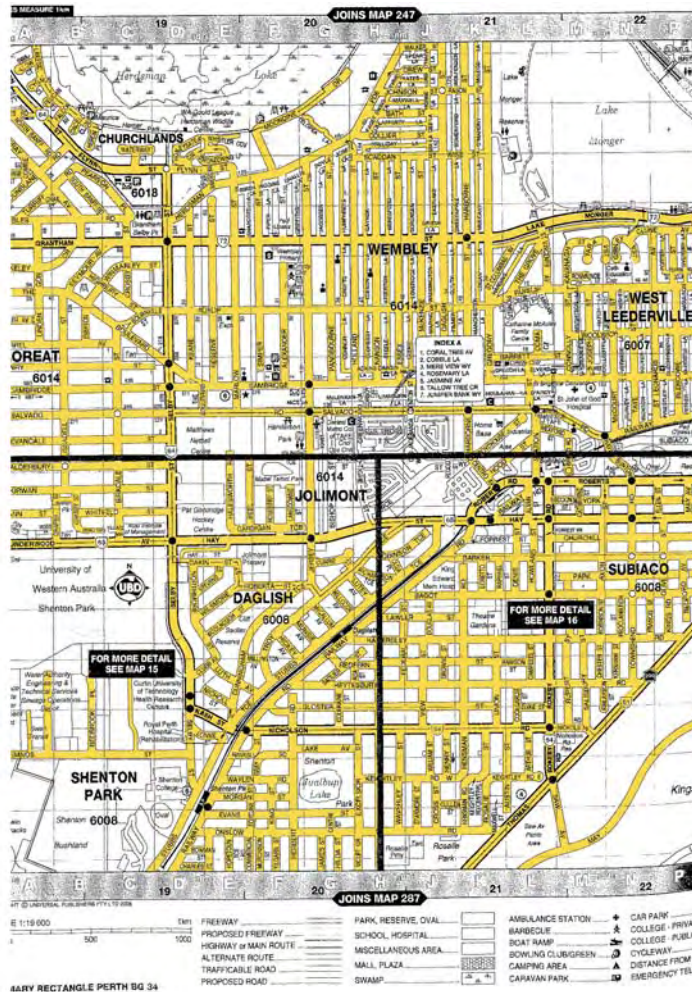
*Relationships Gallaher block with surroundings*



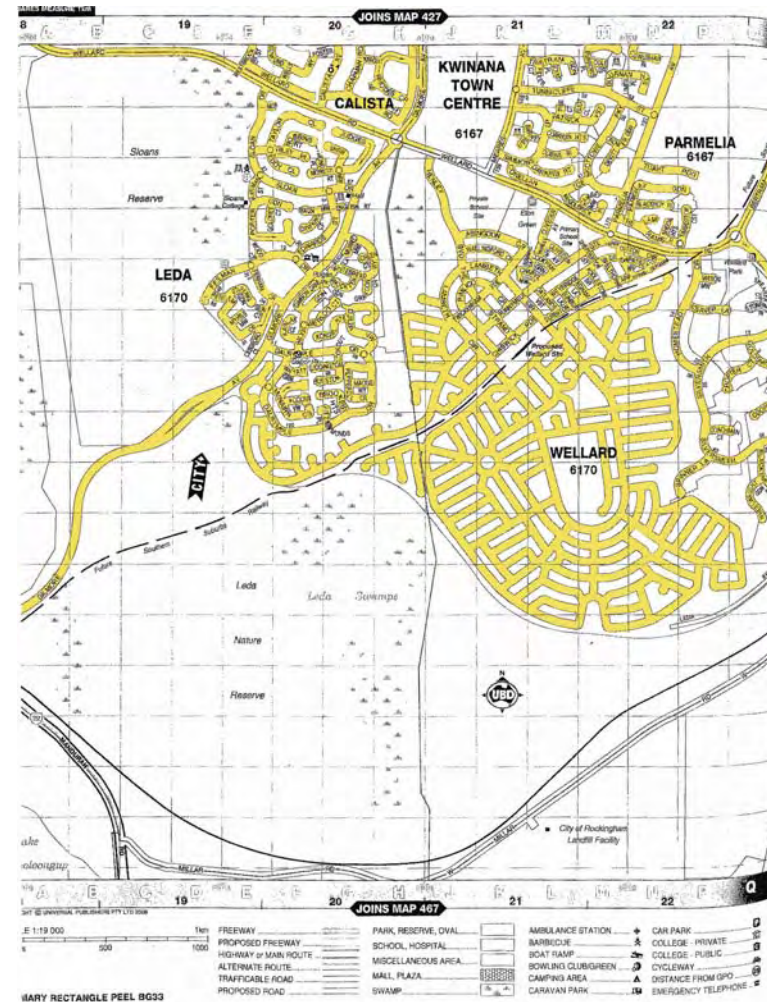


# Comparison of Traditional & New Urbanist Grid

## Traditional



## New Urbanist



# The Future???



“I believe in the city of the future...It is a place where the fragments of something once broken are recomposed.”

Aldo Rossi





*Te Kaunihera o*  
**MANUKAU**  
*City Council*

Private Bag 76917

Manukau City 2104

New Zealand

**Ph** +64 9 263 7100

[www.manukau.govt.nz](http://www.manukau.govt.nz)